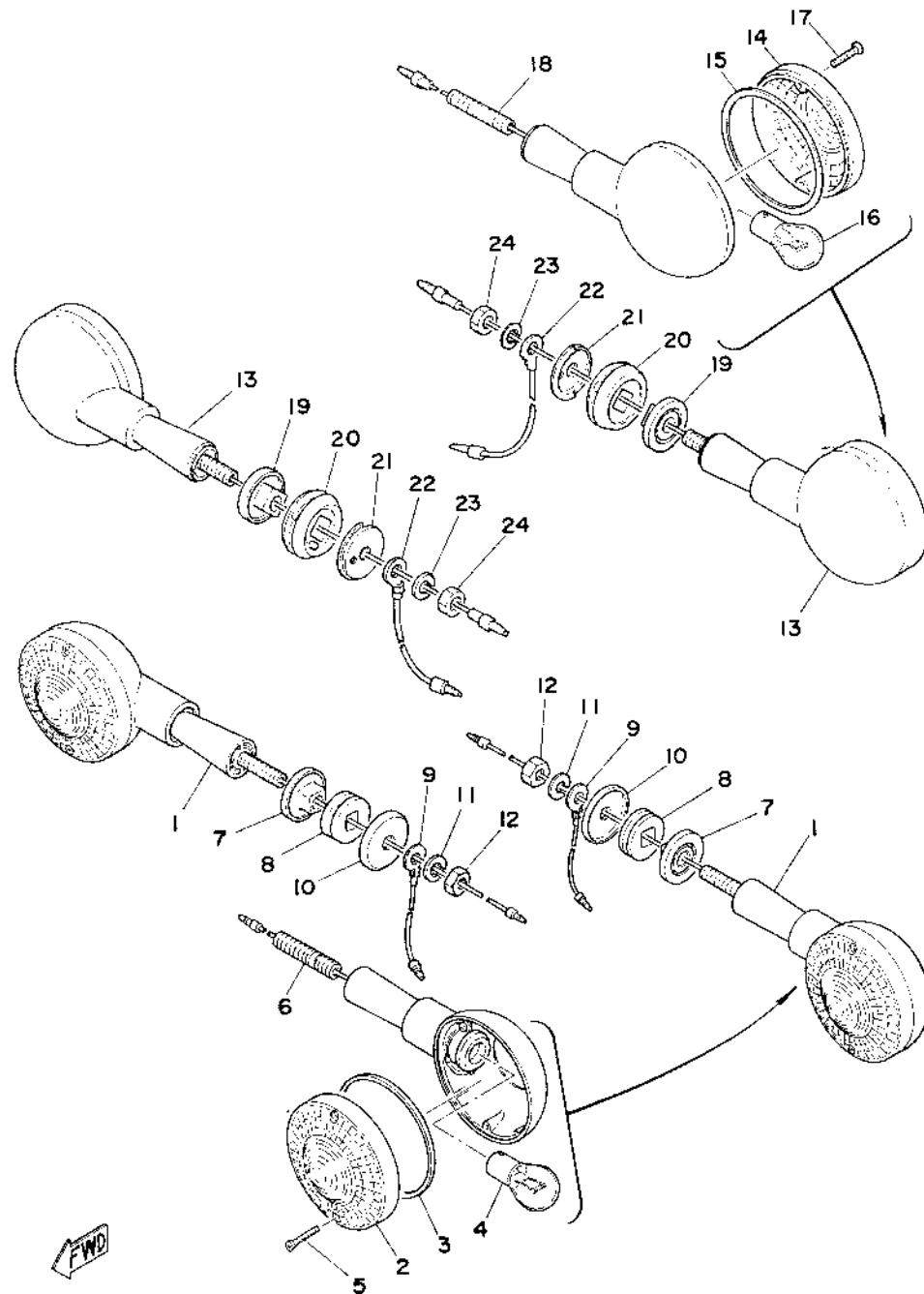
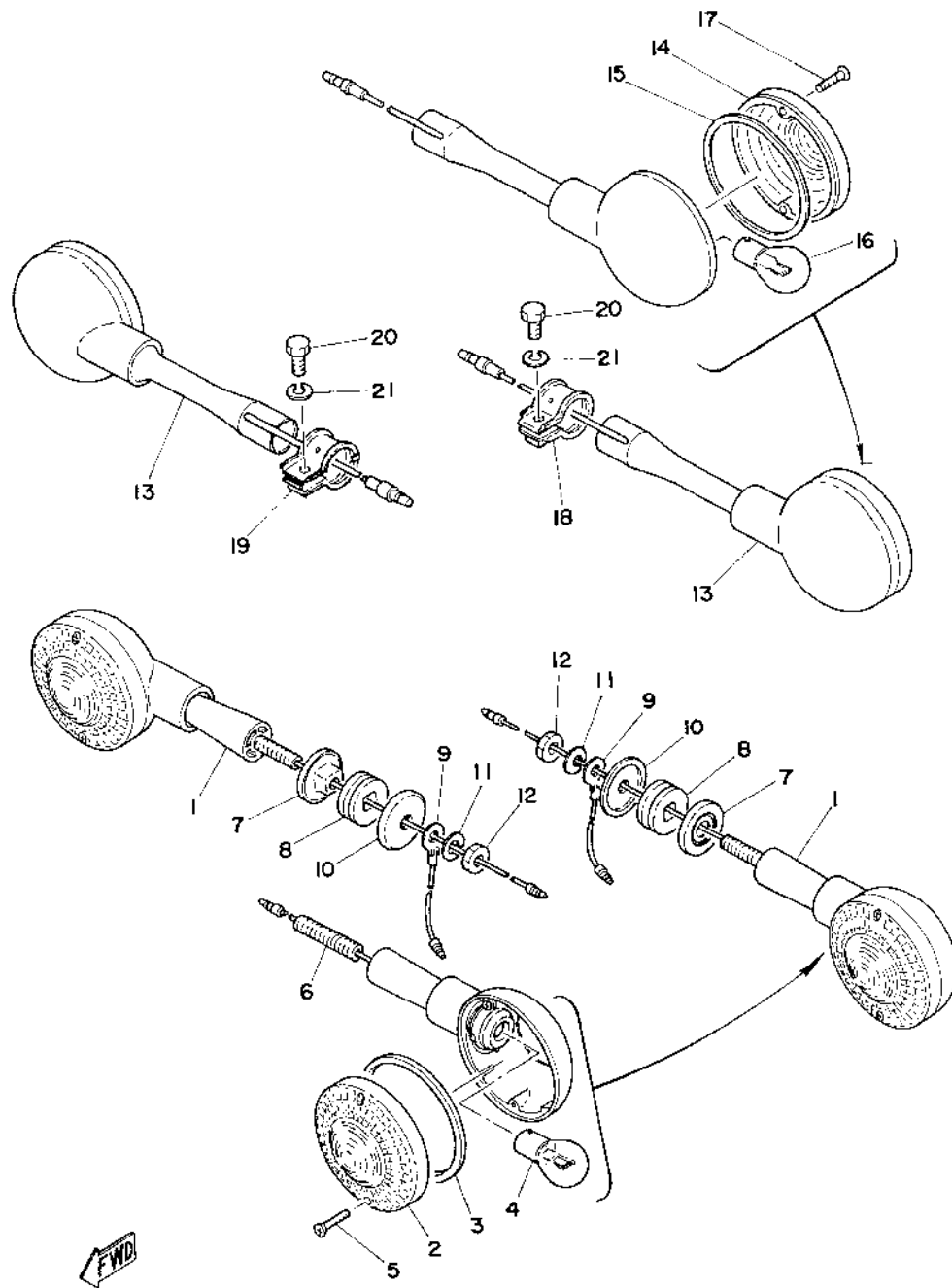


Fig. 44 FLASHER LAMP (XS750D)



Ref. No.	Parts No.	Description	Q'ty		Applicable Machine No.	Remarks
			750D	750-211		
44- 1	341-83310-72-93	FRONT FLASHER LAMP ASS'Y	2			
2	341-83312-70	. LENS, flasher	2			Amber
3	341-83313-70	. GASKET, flasher lens	2			
4	256-83311-70	. BULB (12V-32CP)	2			
5	341-83333-70	. SCREW, lens fitting	4			
6	341-83367-00	. BOLT, stud	2			
7	341-83316-01	COLLAR, flasher	2			
8	341-83321-01	DAMPER, flasher	2			
9	371-82519-00	WIRE, earth lead	2			100L
10	90209-08098	WASHER (341-83348-00)	2			
11	92901-08100	WASHER, spring	2			
12	95301-08600	NUT, hexagon	2			
13	U7-83330-KO-93	REAR FLASHER LAMP ASS'Y	2			Red
	371-83330-21-93	REAR FLASHER LAMP ASS'Y	2			Amber
14	341-83332-70	. LENS, flasher	2			Red
	341-83312-70	. LENS, flasher	2			Amber
15	341-83313-70	. GASKET, flasher lens	2			
16	256-83311-70	. BULB (12V-32CP)	2			
17	341-83333-70	. SCREW, lens fitting	4			
18	371-83367-00	. BOLT, stud	2			
19	341-83316-01	COLLAR, flasher	2			
20	1E6-83321-00	DAMPER, flasher	2			
21	1E6-83348-00	WASHER, special	2			
22	1J7-83354-00	WIRE, earth lead	2			300L
23	92901-08100	WASHER, spring	2			
24	95301-08600	NUT, hexagon	2			

Fig. 45 FLASHER LAMP (XS750-2D)



Ref. No.	Parts No.	Description	Q'ty		Remarks
			7500	7500 Machine No.	
45- 1	341-83310-72-93	FRONT FLASHER LAMP ASS'Y	2		
2	341-83312-70	. LENS, flasher	2		Amber
3	341-83313-70	. GASKET, flasher lens	2		
4	256-83311-70	. BULB (12V-32CP)	2		
5	341-83333-70	. SCREW, lens fitting	4		
6	341-83367-00	. BOLT, stud	2		
7	341-83316-01	COLLAR, flasher	2		
8	341-83321-01	DAMPER, flasher	2		
9	371-82519-00	WIRE, earth lead	2		120L
10	90209-08098	WASHER (341-83348-00)	2		
11	92901-08100	WASHER, spring	2		
12	95301-08600	NUT, hexagon	2		
13	1T4-83330-K0-93	REAR FLASHER LAMP ASS'Y	2		
14	341-83312-70	. LENS, flasher	2		Amber
15	341-83313-70	. GASKET, flasher lens	2		
16	256-83311-70	. BULB (12V-32CP)	2		
17	341-83333-70	. SCREW, lens fitting	4		
18	1T4-83379-K0	BAND, flasher left	1		
19	1T4-83389-K0	BAND, flasher right	1		
20	97301-06014	BOLT, hexagon	2		
21	92901-06100	WASHER, spring	2		