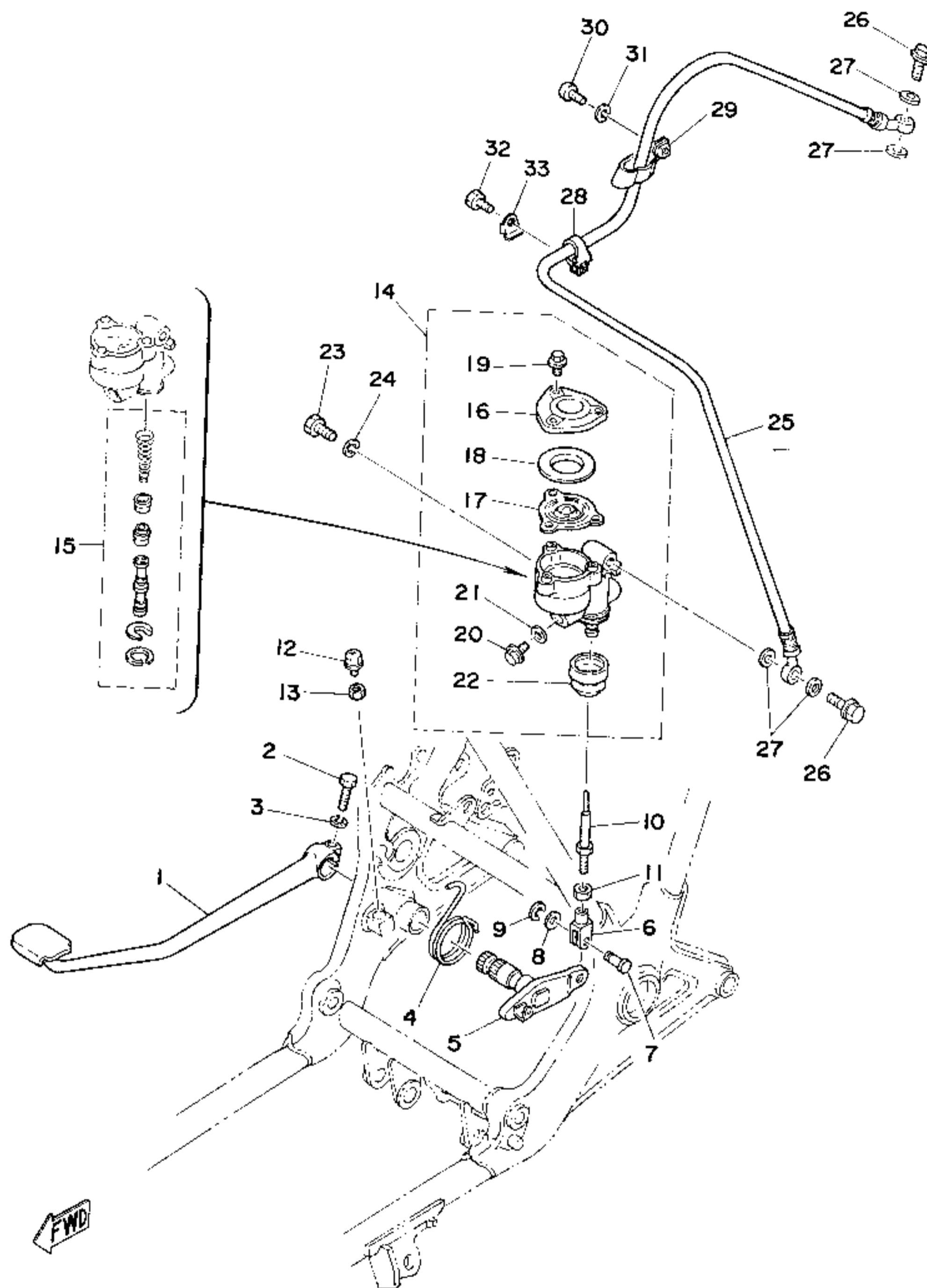
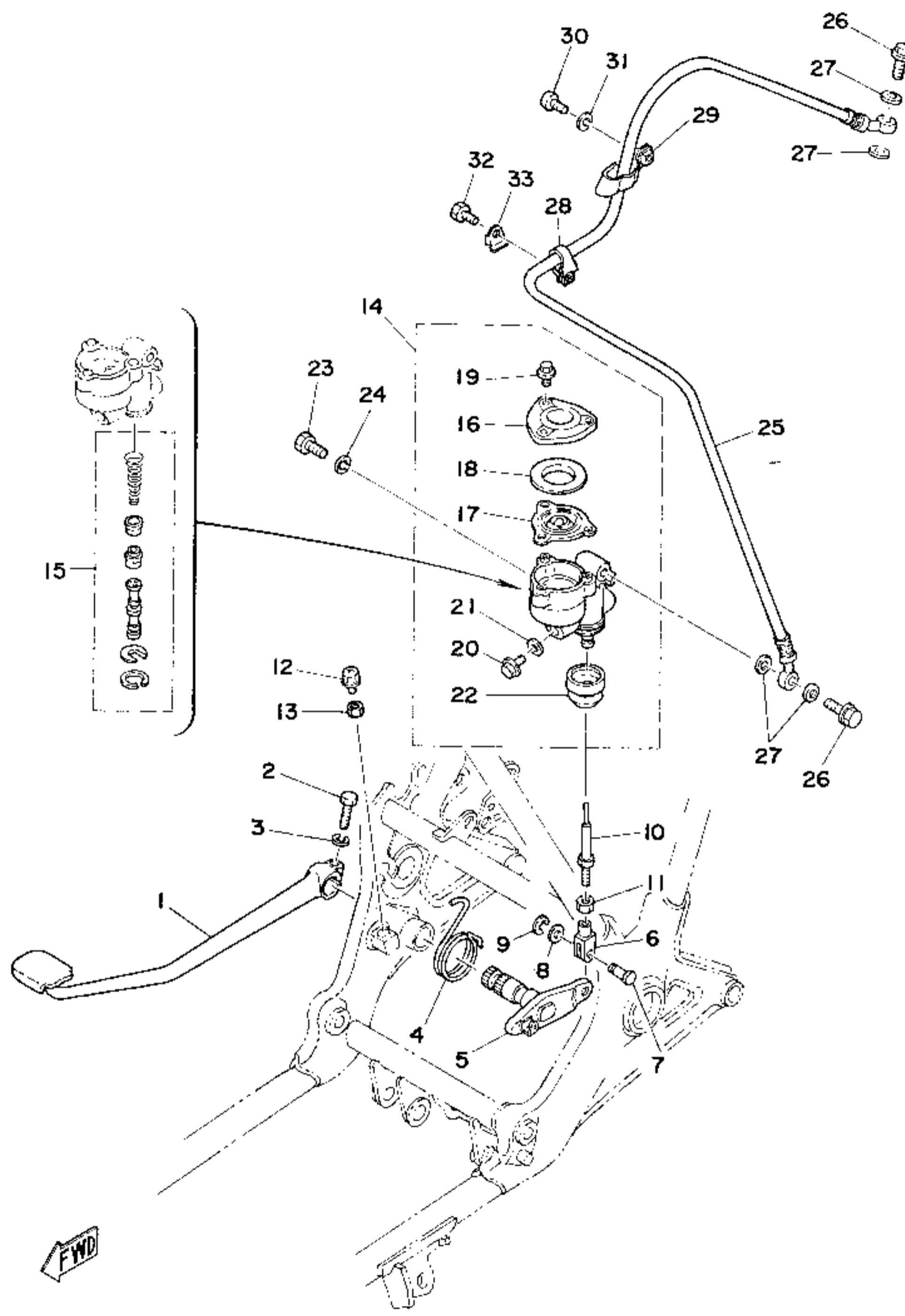


Fig. 25 BRAKE PEDAL - REAR MASTER CYLINDER



Ref. No.	Parts No.	Description	Q'ty		Remarks
			750D	750 Machine No. (21)	
1	1J7-27211-00-93	PEDAL, brake	1	1	
2	90109-06468	BOLT	1	1	
3	92991-06100	WASHER, spring	1	1	
4	90508-40314	SPRING, torsion	1	1	
5	1J7-27212-01	SHAFT, brake pedal	1	1	
6	1A1-27222-01	JOINT	1	1	
7	90249-08124	PIN	1	1	
8	90201-08083	WASHER, plate (156-27226-00)	1	1	
9	93430-06005	CIRCLIP (E-6)	1	1	
10	1J7-27231-00	ROD, brake	1	1	
11	95301-08700	NUT, hexagon	1	1	
12	90153-06008	SCREW (341-27217-00)	1	1	
13	90170-06184	NUT, adjusting	1	1	
14	1J7-25850-50	MASTER CYLINDER ASS'Y, rear	1	1	
15	1J3-20000-50	. CYLINDER KIT, master	1	1	
16	1J3-25852-51	. CAP, reservoir	1	1	
17	1J3-25854-51	. DIAPHRAGM, reservoir	1	1	
18	1J3-25855-51	. BUSHING, diaphragm	1	1	
19	90153-05014	. BOLT, cap	3	3	
20	90153-10015	. BOLT, plug	1	1	
21	90201-10610	. GASKET	1	1	
22	1J3-25862-50	. BOOT, master cylinder	1	1	
23	97301-08025	BOLT, hexagon	2	2	
24	92901-08100	WASHER, spring	2	2	
25	1J7-25874-01	HOSE, rear brake	1	1	
26	90401-10034	BOLT, union	2	2	
27	90201-10118	WASHER, plain (306-25878-00)	4	4	
28	90451-10023	CLAMP 1	1	1	
29	90451-12021	CLAMP 2	1	1	
30	92506-06015	SCREW, panhead	1	1	

Fig. 25 BRAKE PEDAL - REAR MASTER CYLINDER



Ref. No.	Parts No.	Description	Q'ty		Remarks
			750D	750 20 Machine No.	
31	92906-06100	WASHER, spring	1	1	
32	97306-06012	BOLT	1	1	
33	90215-06128	WASHER, lock	1	1	